

FPUA FACTS ABOUT TREE TRIMMING

FPUA maintains a very aggressive tree trimming schedule and all work is performed by qualified, certified and licensed professionals. Please read the following important information regarding our tree trimming policy.

FPUA will remove trees that are:

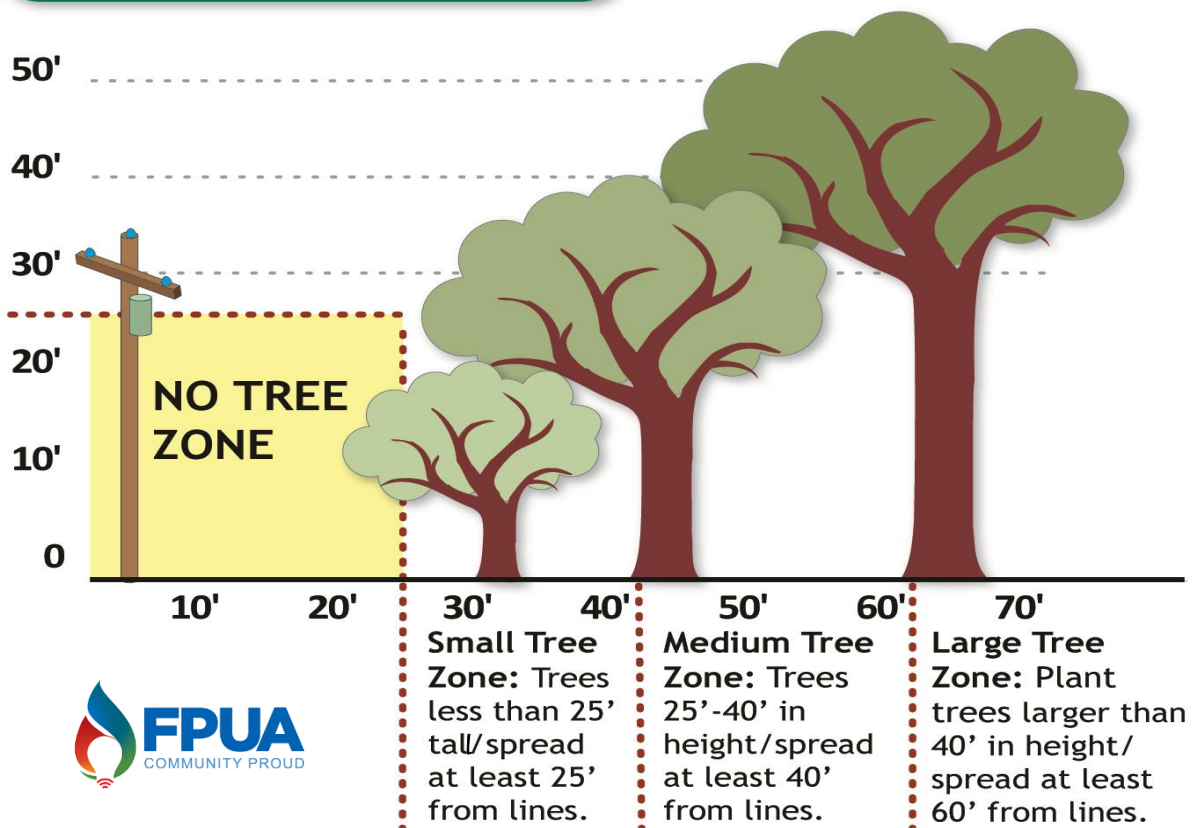
- directly under FPUA electrical equipment
- too close to energized primary lines and pose a safety hazard
- severely leaning, dead, decayed, or pose a direct hazard to lines

The customer is responsible to:

- trim trees around their residence and private lights
- contact FPUA at 772-466-1600 to determine next step if you notice your trees are growing into power lines
- give at least 48 hours notice if FPUA is requested to disconnect & reconnect service to your residence so a qualified professional can trim trees on your property without risk of electrical hazard

Planting the Right Tree in the Right Place

Tree Planting Guide





Tree Trimming Safety Tips

Learn more at www.fpu.com/Company/Public Safety
or call FPUA Customer Service at 772-466-1600